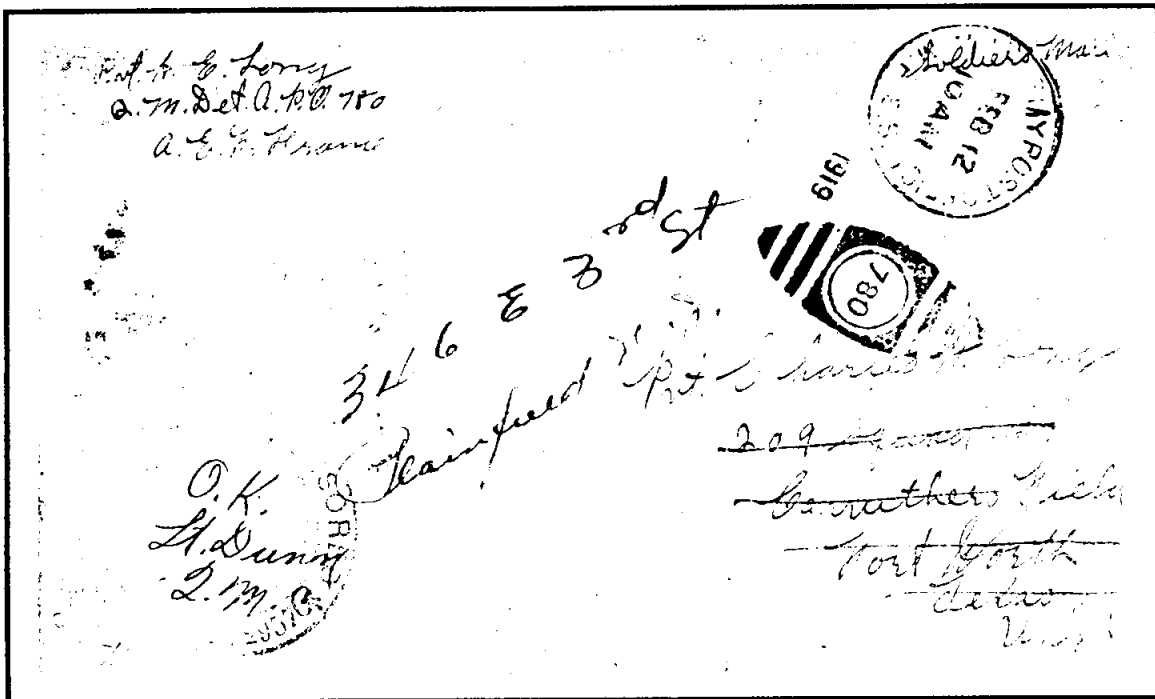
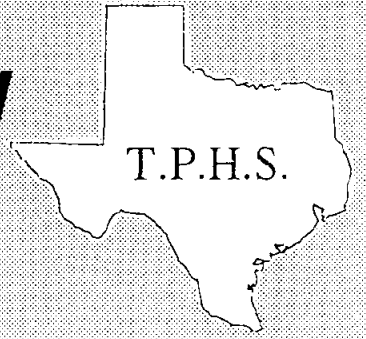


The
Texas Postal History Society
Journal



CONTENTS

| | Page |
|---|------|
| From the President | 3 |
| From the Editor. | 4 |
| San Luis, Texas by Robert E. Baker. | 5 |
| You Call This An Answer? by Joe H. Crosby | 9 |
| The Most Valuable Texas Cover Ever? Charlie Deaton's thoughts on an article in <i>Stamp Collector</i> about a lot in Siegel's October '98 sale | 12 |
| Membership Roster | 15 |
| Paid Advertising | 20 |



On the Cover

A World War I vintage cover that has a lot going for it. The sender was Pvt. H. E. Long, Q.M. Det (Quartermaster Detachment) APO 780, AEF (American Expeditionary Force) France. He endorsed the envelope "Soldier's Mail" which could go free of postage. The upper right CDS reads "Army Post Office (plus other indistinct word or words) Feb. 12 10AM." The year "1919" is outside the dial and a six-bar oval killer has the APO number 780 in a circular center. At lower left is a light red or magenta double circle censor's date stamp with number A.2957 between stars. It is overwritten in three lines "O.K. Lt. Dunn QMC." The addressee is Pvt Charles H. Long, probably a brother or cousin, at 209 Squad B, Carruthers Field, Fort Worth, Texas U.S.A. Evidently the latter had been discharged as the letter was forwarded to what is probably a residential address at 356 E. 3rd St., Fairfield, N.J. A duplexed backstamp reads "Fort Worth, Tex. Carruthers Br" (Branch). Was this an early U.S. Army Air Corps facility?



THE TEXAS POSTAL HISTORY SOCIETY

From the President . . .

Our meeting at TEXPEX last month was one of the best we've had for a long time. Our attendance was up and member participation was excellent.

The business part of the meeting covered many items and we had a lively discussion on most of them. Here is a list of things presented and discussed and action taken at the meeting.

1.) The TPHS will participate in the new TPA website which has just been set up. Cost to us: \$10.00 per year. Lyle Boardman will be the liasson on this project.

2.) The TPHS auction will be discontinued. We will include our Texas postal history material in the new TPA auctions. Members will send their items to John Pearson, manager, who will set up and conduct a postal history section in the TPA auctions. Advantage -- more collectors will have access to bidding since TPA membership is about 400 to our 100, more or less.

3.) We will document by photo-copying the William Emery Award winners each year and furnish a copy of these exhibits to the Wineburgh Philatelic Library. The TPA Foundation will help finance this project.

4.) We should continue having two meetings a year. The first would be in the spring at TEXPEX and the second at the Greater Houston Stamp Show in September.

5.) The financial report given by our Treasurer, Lyle Boardman, showed that we are doing very well financially and membership is holding steady.

The highlight of the meeting was the "Show and Tell" program. Members presented and commented on Texas items and passed them around the table for everyone to see. The result was an extremely enjoyable, productive, and many times humorous postal history session.

Jim Stever had the lone TEXPEX entry in the Emery Award contest. Title -- Nueces County Texas, Statehood Through 1899. The TEXPEX judges awarded him a Silver Medal but a number of us thought he should have received a Gold. Regardless, it was a nice and fully researched exhibit -- and hopefully it got a few new collectors focusing a bit on Texas postal history. And Jim still needs articles for the *Journal*. He'll take "Anything Texas"!

That's it for this time.

Good Collectin',

Ed

P. S. It's also not too early to plan your attendance for our meeting at the Greater Houston Show in September. Watch for the dates and advance publicity.

President

E. F. Christman, Jr.
5419 Jason
Houston, TX 77096

Vice President

John Germann
12102 Whittington
Houston, TX 77077

Secretary-Treasurer

Lyle Boardman
3916 Wyldwood
Austin, TX 78739-3005

Journal Editor

Rex H. Stever
44 Camden Place
Corpus Christi, TX 78412
FAX: (361) 991-4688

*(Dues to the Texas Postal
History Society are \$10 per
year payable to the
Secretary-Treasurer.)*

affiliated with:



From the Editor . . .

On the bottom of page 19 of the last *Journal* is this statement: "The forthcoming May 1999 issue will have TPHS auction No. 17." Not so. On page 8 auction manager Ed Leissner stated "We are constructing Sale 17 now . . ." However, Ed has since become quite depressed as regards our auctions and for good reason. Sale No. 16 had only seven bidders. That's only one-fifteenth (1/15) of our membership. Then one of the seven bidders reported that he had never received the lots that he paid for and wanted his money back. Of course Ed had shipped the lots but this was during the Christmas heavy-mail season and the package never arrived at its destination -- either lost or stolen. Ed sent the TPHS member a refund check. End of story. Maybe end of auctions, at least for now. Apathy has set in.

Meanwhile, TPA has decided to have auctions. Their lots not only include off-cover stamps but also covers, including Texas postal history covers. Constructing an auction is a lot of work. If you don't believe it, ask Ed Leissner. Speaking unofficially, as far as I'm concerned if TPHS members want to consign lots to an auction they should consign them to TPA's auction. Let them do the work. TPA plays to a much bigger audience so the results should be better. Rumor has it that the Texas postal history lots in the last TPA auction did very well.

For me, as editor of this *Journal*, loss of the auction was a blow. As stated in an earlier issue, I am trying to put out a quality product consisting of 20 pages (auction 17 was to be about 5 pages) every three months. To use an old cliché, it's like pulling teeth to get articles. Six or seven members have been very forthcoming and a couple others are working on future epistles which means that I haven't heard from 80 or 85 members. I know there are collectors of Austin, Beaumont, Dallas, Ft Worth, Houston, San Antonio and Waco postal history whose contributions would greatly improve our *Journal*. What say, guys?

Another use for our *Journal* should be as a bulletin board where members could seek research information, etc. from other members and a place where questions could be asked and answered. A case in point: last issue R. M. Arndt asked whether one of his covers was "philatelic" and in this issue Joe Crosby answers the question. We need more of this type of interplay between members. And we definitely need articles on heretofore unreported areas of the state.



The Seigel "Rarities Sale" on May 15 will feature a large size Columbian 10-cent stamped envelope bearing a full set of Columbian stamps - 1-cent to \$5 - sent in 1893 by a stamp dealer to one of his clients. Expected realization is \$40,000 - \$50,000. This is proof positive that a "philatelic" item can have great value.

SAN LUIS, TEXAS

by Robert E. Baker

The town of San Luis was located in Brazoria County on the west side of San Luis Pass which separates the west end of Galveston Island from Brazoria County. It was founded by a forty year old land speculator from Philadelphia by the name of George Hammeken who purchased a league of land (4428.4 acres) from James F. Perry. Perry was agent for the estate of Stephen F. Austin. Perry's wife was Austin's sister.

When it became known that San Luis Pass had an average depth of eighteen feet of water which could provide a good harbor it was felt by some that this location (San Luis) would be better than Galveston for a commercial port. At this point the following enterprising men organized The San Luis Company: Tod Robinson, Matthew Hopkins, F.A. Sawyer, W.P.B. Gaines, Ferdinand Pinkard, James Love, James R. Jennings, James F. Perry, William H. Jack, Judge J. R. Morris, J. Templeton, Doswell, R. Mills and others.

By the end of 1838 the town was laid out in a one-mile square on the northern part of the island. The main streets were 100 feet wide. A survey was made and forty houses were erected. A cistern seventy feet in diameter was built using bricks brought from Philadelphia. Many eastern and foreign persons purchased lots. A ferry plied the waters of San Luis Pass between the town of San Luis and Galveston. As shown in the San Luis Advocate's ad of October 20, 1841 typical ferry charges were \$1.00 per person, \$1.75 for man and horse, \$2.00 for man and wagon and \$1.50 per head of cattle. By 1840 San Luis was a thriving port of 2000 people with a 1000-foot pier. There were also 160 head of cattle and 600 head of sheep in the city.

| WEST PASS, GALVESTON AND SAN LUIS FERRY. | |
|--|------|
| The rates of ferrriage, hereafter, will be as follows: | |
| FROM SAN LUIS TO PENINSULA. | |
| Per Man, | 37 |
| " do and horse, | 62 |
| " do do and waggon, | 1 25 |
| " do double do do | 1 75 |
| Cattle per head, | 1 00 |
| FROM SAN LUIS TO GALVESTON. | |
| Per Man, | 1 00 |
| " do and horse, | 1 75 |
| " do do and waggon, | 2 00 |
| " do double do do | 3 00 |
| Cattle per head, | 1 50 |
| San Luis, Oct. 20-71f | |

Figure 1. Ad in San Luis Advocate.

Ocean-going vessels could not cross the bar into the Brazos and Colorado Rivers. Thus cotton and other commodities were shipped by shallow-draft boats to San Luis for trans-shipment overseas. These coastal lighters also supplied plantations along both rivers. Stephen F. Austin once proposed that a canal be dug between the Brazos River and San Luis Pass. It was estimated that a ditch only 200 yards long would suffice. A company named The Brazos Canal Company, with Gail Borden as secretary, was organized but the canal was never dug.

A post office was established at San Luis on July 13, 1840 with Edmond Andrews as postmaster. He served until April 10, 1843 when Augustus Burr was appointed. The office was discontinued August 16, 1848. Covers originating at San Luis are rare. Figure 3 is such a letter. Written at San Luis on August 9, 1840, this folded letter is addressed to Louisville, Kentucky. It was put on a ship at Galveston bound for New Orleans, and undoubtedly travelled up the Mississippi and Ohio Rivers to Louisville.

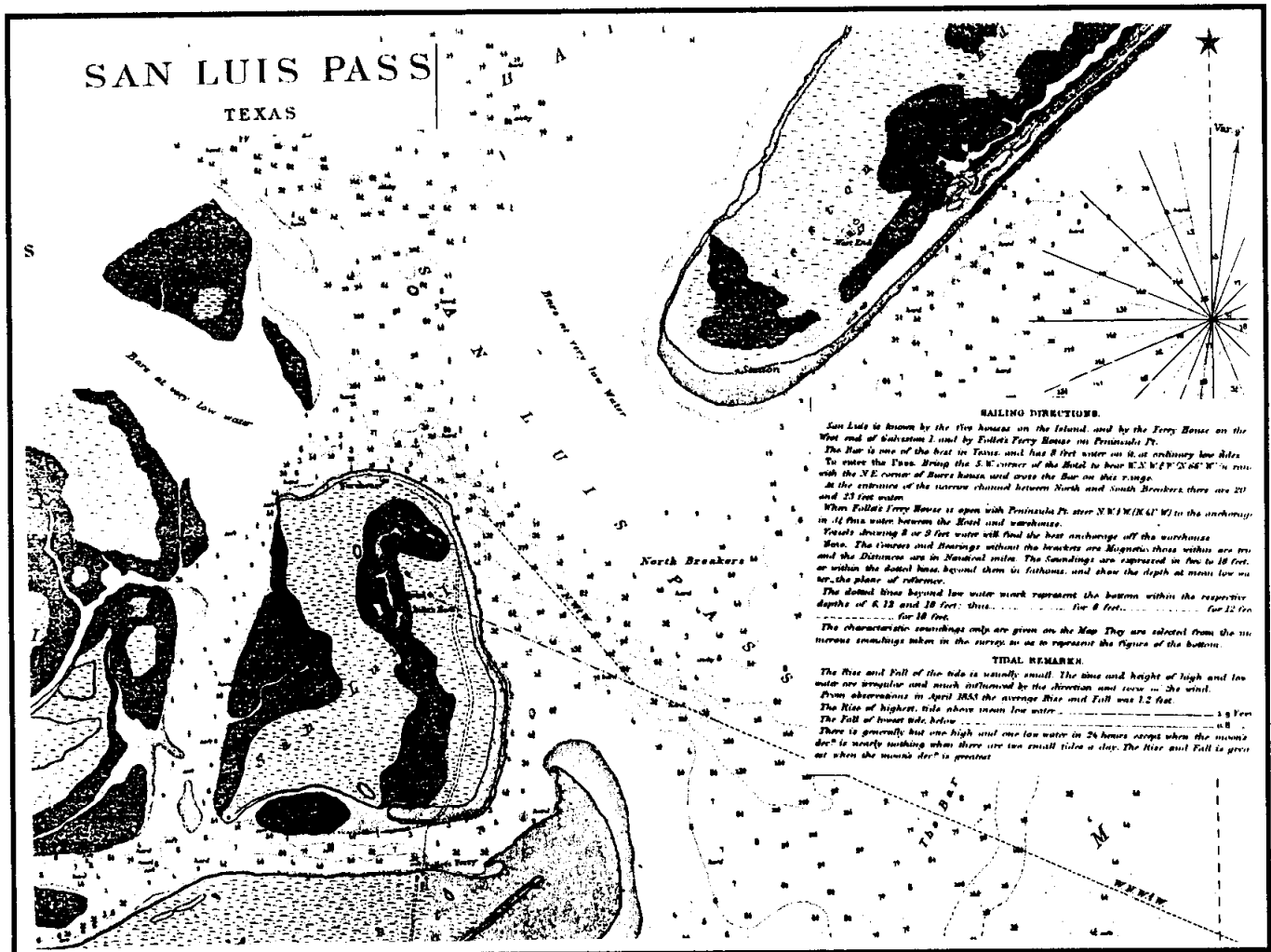


Figure 2. Map of San Luis Pass area showing San Luis Island and west end of Galveston Island.

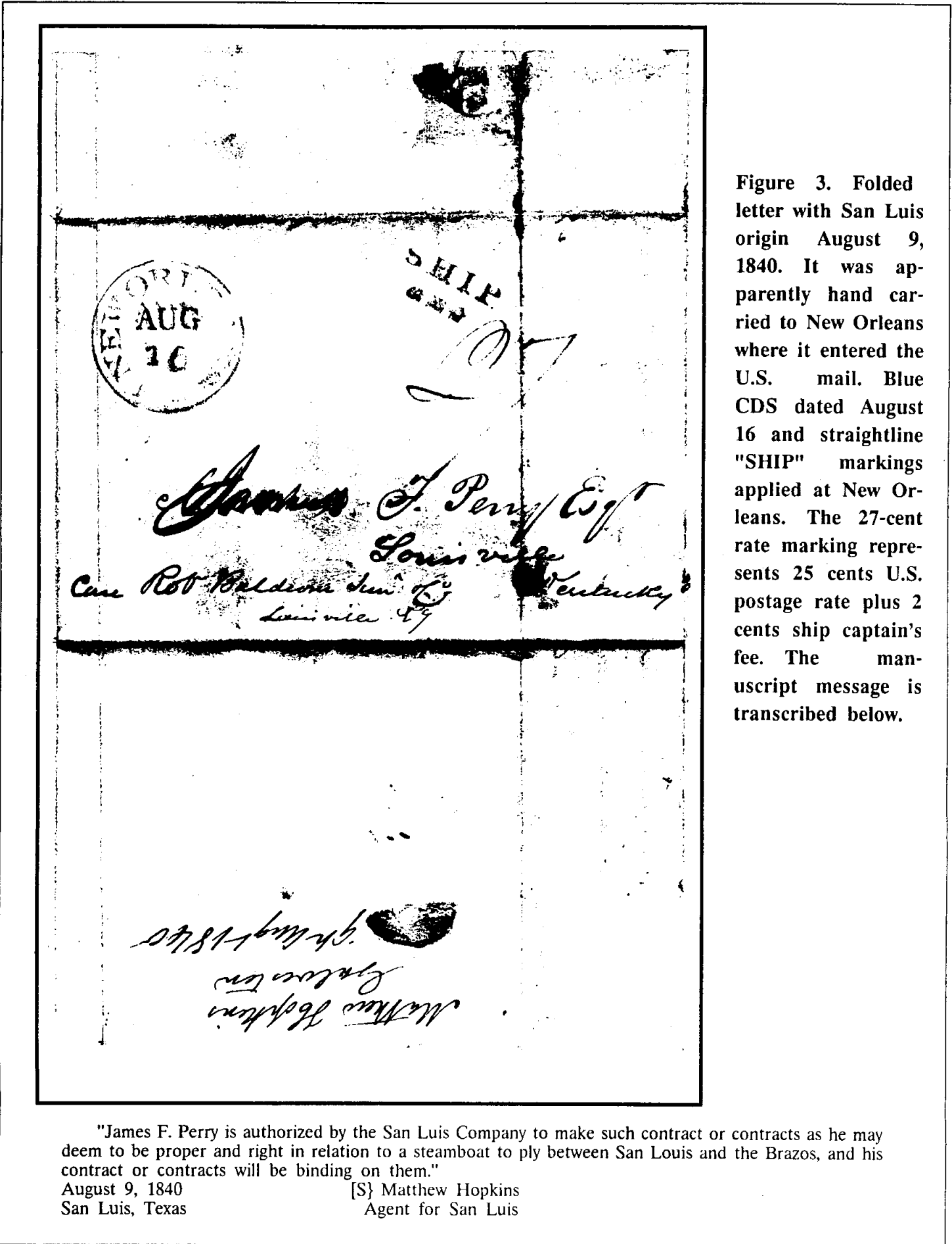


Figure 3. Folded letter with San Luis origin August 9, 1840. It was apparently hand carried to New Orleans where it entered the U.S. mail. Blue CDS dated August 16 and straightline "SHIP" markings applied at New Orleans. The 27-cent rate marking represents 25 cents U.S. postage rate plus 2 cents ship captain's fee. The manuscript message is transcribed below.

James F. Perry Esq
Louisville
Kentucky
Care Robt Balderson Junr Esq
Louisville Ky

Matthew Hopkins
Agent for San Luis
gr Aug 1840

"James F. Perry is authorized by the San Luis Company to make such contract or contracts as he may deem to be proper and right in relation to a steamboat to ply between San Luis and the Brazos, and his contract or contracts will be binding on them."

August 9, 1840
San Luis, Texas

[S] Matthew Hopkins
Agent for San Luis

San Luis had the first cotton compress in Texas and the first boat yard in Texas. The town had two newspapers, the San Luis Advocate and the San Luis Times. The early Washington press used by the San Luis Advocate is now on display at Galveston in the Galveston News building. The town also had two hotels, one operated by Mr. and Mrs. Charles Bennett and the other by a Mr. Follette. There were two general stores, one owned by J. F. Woodhull, the other by Matthew Hopkins. One of the stores advertised in the Advocate that there were 20,000 Cuban cigars for sale. The town also had a portrait painter.

In 1841 the San Luis Company owned a steamboat known as the "CONSTITUTION" which operated between San Luis and the Brazos and Colorado Rivers. Could this be the steamboat ordered in the Figure 3 letter which authorized James F. Perry to have such a craft built?

After 1844, as a result of a series of storms and high tides, people began to leave San Luis for Galveston and elsewhere. By 1853 the population had dropped to between four and five hundred. Subsequent storms after 1853 caused the town to be abandoned. One exception was a hotel named "Halfway House" which continued to operate until destroyed by the 1900 storm.

SOURCES:

GALVESTON - HISTORY OF THE ISLAND AND THE CITY - 1878
by Charles W. Hayes, Pages 313, 314 and 315

POSTOFFICE PAPERS, Page 76.

A NARRATIVE HISTORY OF BRAZORIA COUNTY - 1975
by James A. Creighton, Pages 158, 159, 474, 475 and 488.

ISLAND OF MISFORTUNE -- by Janet Eberspacer
from "The Texas Historian" January, 1971, Pages 17, 19 and 20.

GHOST TOWNS OF TEXAS
by Dick King, Pages 92, 93 and 94.

TREASURES OF GALVESTON BAY - 1977
by Carroll Lewis, Page 100.

DISCONTINUED POSTOFFICES OF BRAZORIA COUNTY
by William K. McDaniel
Texas Postal History Society Journal --Page 64, March 1986.

SAN LUIS ADVOCATE -- Various editions in Rosenberg Library.

YOU CALL THIS AN ANSWER ?

by Joe H. Crosby

When is a Cover "Philatelic?" asks R. M. Arndt in the February, 1999 issue of the *Texas Postal History Society Journal*. He goes on to describe and illustrate a cover mailed at Bandera, Texas with a Schermack Type III (#344 or 384) bearing a corner card from an attorney, W. S. Ethridge, Bandera Texas. Arndt has been unable to find the mailing attorney on any listing of philatelists or stamp dealers. So he asks, "Is this a Philatelic cover?" and further asks, "Are there other Schermack Type III covers from Texas?"

My answers are: probably YES to the first question and definitely YES to the second. Why? Because I have a cover (Figure 1) from S. B. Hopkins, Laredo, Texas with Schermack Type III (#482). The cover is addressed to Chas. A. Townsend (a known stamp collector). So, yes, there is another Schermack Type III Texas cover, but it is a philatelic cover.

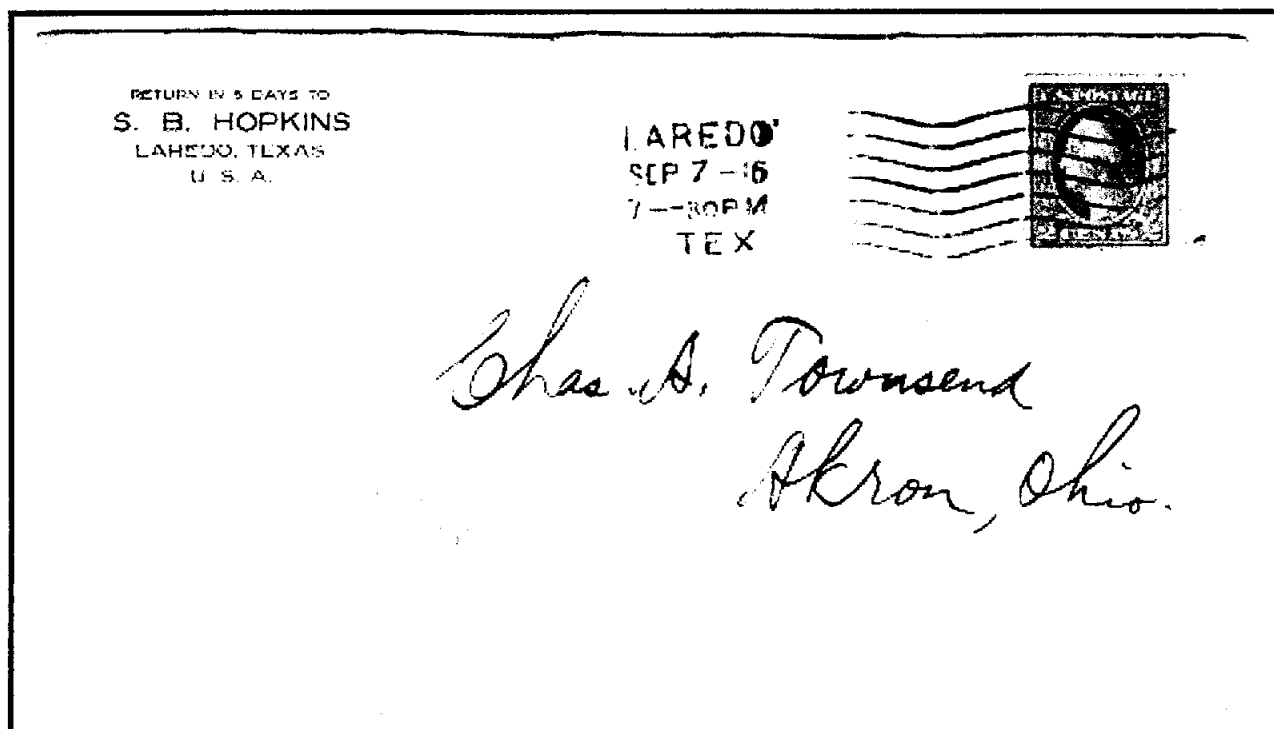


Figure 1

Laredo, Tex. Sept. 7, 1916

Columbia Postal Supply Company machine cancel ties #482
with Schermack Type III private perforations

I have another cover (Figure 2) with a printed corner card of S. B. Hopkins/Importer and Wholesaler of Mexican Postage Stamps with his old Laredo, Tex. address changed in manuscript to Tampa, Fla. and mailed from Tampa on Feb. 14, 1918, to Boerne, Texas.

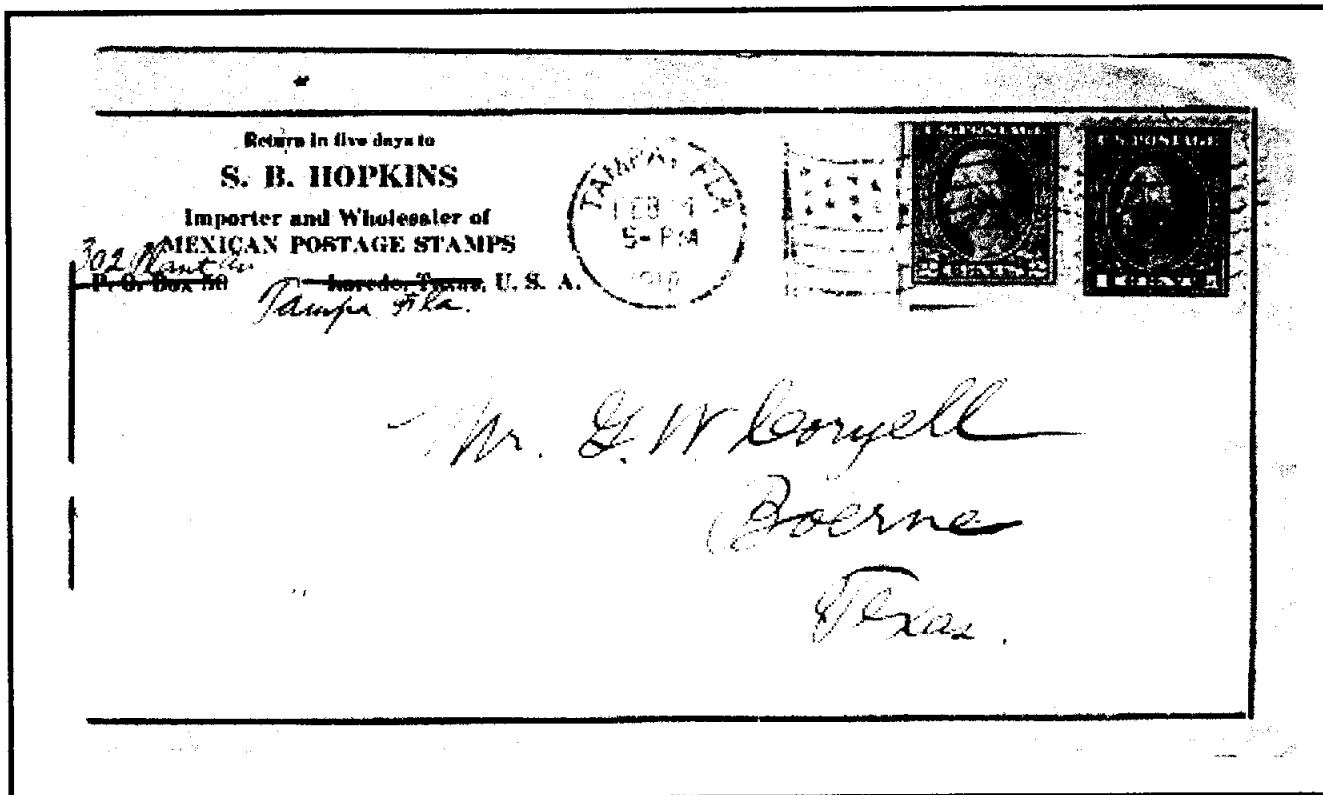


Figure 2

Tampa, Fla. Feb. 14, 1918

American Flag Cancel ties one-cent #481 and 2-cent #482
to pay 3-cent War Rate to Boerne, Texas.

Only the 2-cent #482 has Schermack Tupe III private perforations

This pretty well proves that S. B. Hopkins' use of Schermack Type III's on BOTH of my covers were "Philatelic" uses. The Figure 2 cover strongly suggests that the cover in the February, 1999 issue of the *Journal* has some connection to S. B. Hopkins. It is addressed to W. A. Hopkins/Sec. I.O.O.F./Del Rio, Texas. Del Rio is just up the Rio Grande from Laredo, and I would surmise that the Stamp Dealer S. B. Hopkins was a relative of W. A. Hopkins of Del Rio. Probably as Secretary of the I.O.O.F. in Del Rio, W. A. Hopkins sent self-addressed, stamped envelopes to encourage members to respond to lodge business. And where might he have gotten his Schermack Type III stamps -- from S. B. Hopkins in Laredo? So, I would answer the question, "Is this a 'Philatelic' Cover?" with a PROBABLY YES.

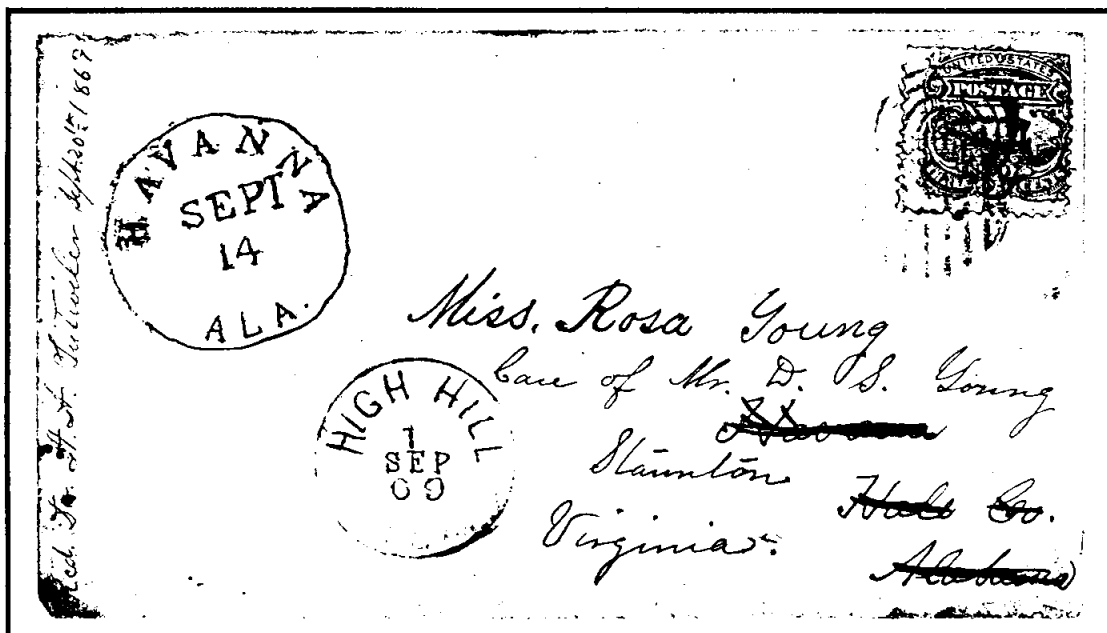
But that is just *my* definition of the question posed in the title of Arndt's article, "When is a Cover 'Philatelic'?" My definition, when applied to private perforation stamps, which, after all, were *intended* for use in vending and affixing machines, is that philatelic covers are those that are traceable to a stamp collector or stamp dealer.

I realize that under my narrow definition, I would exclude the four famous Koslowski 4-cent (#314A) Schermack Type III Covers, since the sender is known to have been a Detroit stamp collector who made up the covers and sent them to himself and others. That is just *my* definition, and others are entitled to their own opinion.

The 4-cent cover rarity with a strip of three (#314A) plus a one-cent Jamestown (#328) to Germany, was described in the Dr. Joseph Agris Sale of United States Coil Issues (Shreves Philatelic Galleries, Sept. 5, 1997, Lot 253) as a "cover of incredible rarity and stature, which has long held the distinction of being regarded as the 'greatest 20th Century United States cover in existence'." The cover realized \$220,000, including the 10% buyers premium. So it becomes obvious that even IF a private perforation cover is created by a "known stamp collector", it does not mean that it is rejected as undesirable. Therefore, reasonable (or some may say unreasonable) minds can disagree, but by *my* standard, the cover to Del Rio, Texas is just *too coincidental* to pass the test, and is PROBABLY PHILATELIC.

It is probably worth something less than \$220,000, but -- as of now -- it is only one of two Schermack Type III covers from Texas.

Now, lets see if THAT brings the rest of them OUT OF THE SHOE BOXES!!!!!!



Posted at High Hill, Fayette County Texas on September 1, 1869 to Havana, Alabama and forwarded to Staunton, Virginia. The High Hill post office was established in 1860, was operative during the Confederate era, and finally abandoned in 1907.

THE MOST VALUABLE TEXAS COVER EVER ?

The article below is reprinted from the January 4, 1999 issue of *Stamp Collector* by gracious permission of publisher Wayne L. Youngblood. *Stamp Collector's* new format has won extensive praise throughout the U.S. philatelic community and would be a great addition for TPHS members to consider.

The question posed by the above title originated with member/dealer Charlie Deaton. The four single 1868 3-cent B grills were removed from the illustrated Mason, Texas cover and sold individually. The left stamp realized \$170,500 at the Siegel auction last October of the Robert Zoellner collection. Charlie points out that if the other three stamps were to sell for the same price this one brought, the complete cover would have a value of \$682,000!! Is there a TPHS member with another Mason cover bearing this stamp" It would be worth your while to check your holdings.

From *Stamp Collector*:

1868 3-CENT ROSE B GRILL

Because of concern that used stamps could have their cancellations cleaned or erased and be fraudulently reused, in 1867-68 the United States Post Office Department experimented with and introduced a security technique known as grilling.

In a sheet-fed process, a small rectangular grid of tiny, pyramidal steel teeth was embossed into the design of each stamp, breaking the paper fibers so that, when cancelled, the ink would penetrate deep into the stamp paper.

This left stamps with a characteristic pattern from which "grill" is derived.

This (as well as actual weakening of the stamp itself) prevented the chemical or mechanical removal of the cancel and reuse of the stamp.

Grilling was used up to the 1873 Continental Bank Note Co. issues, but was eventually abandoned. Not only did it make stamps more fragile and difficult to handle but the cost of applying the grills probably exceeded the amount of revenue lost from fraudulent cleaning and reuse of postage.

Some of the earliest types of U.S. grilled issues (identified by a capital letter signifying the number and size of embossed points on the stamps) are among the rarest U.S. stamps, not least because new varieties were being identified long after the grills were first applied.

One of these is the 1868 3-cent rose B grill, the "B" referring to a grill pattern 22 points wide by 18 points high, measuring 18 millimeters by 15mm -- much wider than that found on most early grilled issues.

The B grill was not proven to exist on issued U.S. stamps until a cover came to light in 1969 -- more than a century after the stamps had been produced.

Shown below, the cover to Germany was franked with four copies of the 3-cent rose B grill cancelled in Mason, Texas, back in February 1869.

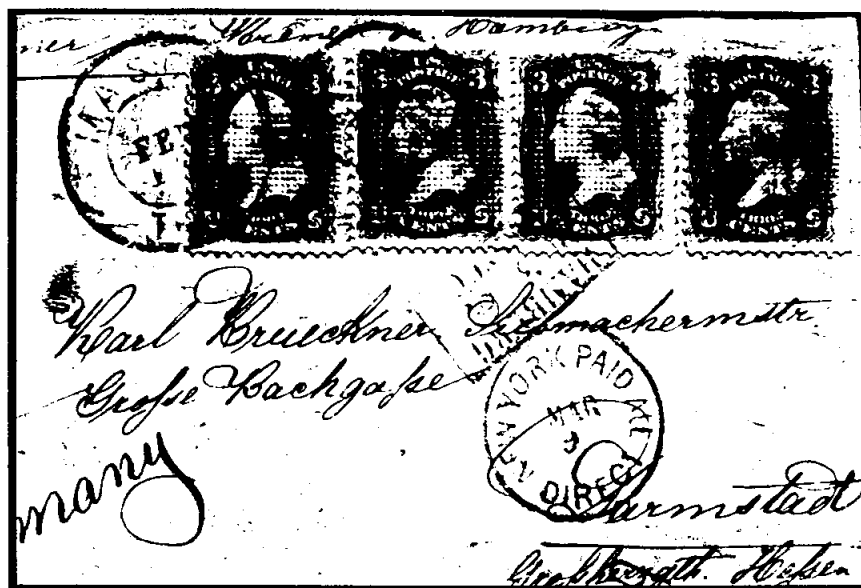
The four 3-cent B grill stamps, cataloged as Krause-Minkus 61A / Scott 82, were removed from the cover and sold independently.

To this day, these are the only authentic 3-cent rose B grill stamps known to exist.

Others certainly could still be out there, unidentified on another otherwise unremarkable cover, or resting unrecognized in an old album.

Shown at the top of the next page is the 3-cent rose B grill from the left position on the cover. It was auctioned in the sale by Robert A. Siegel Auction Galleries of the Robert Zoellner collection -- the only complete collection of the first century of U.S. stamps ever formed, including the rarest of the grilled issues, the 1-cent blue Z grill.

The 3-cent rose Washington B grill was lot 217 in the October 1998 auction in New York City, and sold for \$170,500, including the 10% buyer's commission.



This February 1869 cover from Mason, Texas to Germany was franked with the only four examples of the 1868 3-cent rose Washington B grill that have been identified to date. All four were removed from the cover and have since been dispersed to various U.S. collections.



217

Description of lot 217 in the Siegel catalog of the Robert Zoellner collection, October 8-10, 1998. Reproduced here with kind permission of the Robert A Siegel Auction Galleries, Inc.

B GRILL

1868 Transitional 18 x 15 millimeter Male Grill (Points Up)

217 **3c Rose, B. Grill (82).** Rich color in shade of 1868 printings, centered to upper left as are all four known examples, part of Mason Tex. double-circle datestamp and fancy cancel

AS FINE AS THIS GREAT RARITY EXISTS. ONE OF THE FOUR 3-CENT B GRILL STAMPS DISCOVERED TOGETHER ON COVER IN 1969. WHICH REMAIN THE ONLY EXAMPLES KNOWN TO PHILATELY.

The distinguishing characteristics of the true B Grill are its size—22 points wide by 18 points high (18 x 15 mm)—and the points-up orientation of the grill, which shows as a pyramidal (male) grill impression on the back. For years there was confusion over what constituted a B Grill, with Elliott Perry arguing that the partially-erased female C Grill (see lot 219) was the true B Grill. However, the four stamps discovered in 1969 on a cover to Germany, postmarked at Mason, Texas, in February 1869, disproved Perry's theory. These stamps are irrefutable evidence that an 18 x 15 millimeter male grill was used on stamps issued to the public. A photograph of the complete cover as discovered is shown in the Appendix on page 373.

The deep reddish shade and thinner paper of the 3c B Grill stamps are more typical of the mid-1868 printings and quite different from the paler Rose shades and thick paper of the 1867 and early 1868 3c grilled issues (A, C, D, Z and some E production). The shade and paper indicate that the B Grill was implemented after the 1867 experimental period and after the first two months of regular 1868 grill production (see timeline on page 144). Perhaps the B Grill was created during the process of making a replacement grilling device for one of the two machines. The grilling surface must have worn during production of many thousands of sheets, and it is possible that replacement grills would become necessary in mid-1868. Through miscalculation or possibly deliberate experimentation, the grill size per stamp on this new B Grill device was twice the width of the F Grill. Based on the small number of surviving copies, this wider grill must have been quickly modified or discarded. Sheets with the B Grill made their way into the regular supply and, in the case of the discovery examples, were used in early 1869.

Ex Isleham (acquired privately from Eugene Costales). With photo of 1969 P.F. certificate for cover and 1986 P.F. certificate..... 100,000.00

TEXAS POSTAL HISTORY SOCIETY

1999 MEMBERSHIP

(updated from 1999 Dues Notices as of 4/8/99)

ALEXANDER, James R.

P.O. Box 21792, Waco, Texas 76702-1792
Tel. 254-757-1838
e-mail: jalex5943@aol.com
Col. Covers, especially DPOs from McLennan, Bosque and Coryell Counties. Waco Village. Early Illustrated Adv. covers (any state) for Dr. Pepper, Barb Wire, Windmills, & Lightning Rods.

ARNDT, Carol G.

P.O. Box 1095, Odessa, TX 79760-1095
Tel. (H) 915-366-6467
Col. Spray markings from GMF 797; UN

ARNDT, R. M.

P. O. Box 60292, Midland, TX 79711-0292
Tel. (H) 915-366-6467
Col. Texas Postal History, 20th Century Depression cancels; military postal history including correspondence.

BAILEY, James F., Jr.

P.O. Box 937, Brownwood, TX 76804
Tel. 915-646-7034 (H) 915-646-6576 (W)
Col. Postal History of Brown County; Mint Australia & New Zealand; Norman Rockwell on stamps, Dahomey & Benin – mint & used.

BAKER, Robert E.

6 Adler Circle, Galveston, TX 77551
Tel. 409-744-2223
Col. Galveston postal history

BALLANTYNE, Larry F.

1710 Wine Cedar Lane, Katy, TX 77450
Tel. 281-579-6276 (H) 281-870-6968 (W)
Col. 19th Century U.S. Postal History - Locals and Express companies

BAUER, Walter C.

6830 Thrush Drive
Houston, Texas 77087-6633
Tel. 713-649-0141
Stampless & early USA (including Texas); GB; Canada; France; Germany; Austria; Switzerland.
Also transcribe and translate hard-to-read letters, etc from Germany and France.

BAUER, William H.

Box 519, Unadilla, NY 13849-0519
Col. Colorado. Postal History, & Otsego County N.Y. Covers.

BENDER, Fred A., Dr.

P. O. Box 5087
Temple, TX 76505-5087
Tel. 254-773-6239
Col. Texas covers (Marshall & Jefferson town cancellations). Confederate; Texas Independence; Battleship Texas.

BERRYHILL, James B. Jr.

1700 Plum Circle, Waco, TX 76706-1629
Tel. (H) 254-752-9810 (W) 254-710-3167
e-mail: james_berryhill@baylor.edu
Col. General; McLennan & Brazoria Counties.

BLAIR, Jeffrey D.

1406 Kelving Way, Wharton, TX 77488-3416
Tel. (H) 409-532-8023 (W) 409-282-2000
e-mail: jblair@intertex.net
Col. Wharton County – all DPOs, any pre-1900; Texas Postal History, U.S. Mint; U.S. Airmails (pre 1930).

BOARDMAN, Lyle C.

3916 Wyldwood, Austin, TX 78739-3005
Tel. 512-282-4150 (H) 512-929-2461 (W)
e-mail: LCBoardman@AOL.com
Col. US; UN; Canada; Germany; Souvenir Cards, US Revenues, Proofs; Slania; Austin Covers

BOYD, Ernest M.

2711 Lynn, Big Spring, TX 79720
Tel. 915-267-6871
Col. CSA and Hopkins Co. Covers (Sulphur Springs, Bright Star, etc.), US Singles & Plates

BYNE, Richard H.

7518 Buckskin Ln.
San Antonio, TX 78227-2716
Tel. 210-674-1146
e-mail: rhbcsaps@flash.net
Col. Confederate States; Machins

CHRISTMAN, E. F., Jr.

5419 Jason, Houston, TX 77096
Tel. 713-664-1524
Col. W.W. II Censored & Military mail; Postal History of Harris & Ft. Bend counties.

COLLYER, David C.

1020 Green Ridge Terr., Saginaw, TX 76179-3406
Tel. 817-232-3467 (H) 817-648-2611 (W)
e-mail: collie@flash.net
Col. 776 FDC & all Centennial Activities; Texas State Hospitals; Callahan, Collins, Delta, Denton, Fannin, Grayson, Hunt, Kaufman, Rockwall, Tarrant, Terrell, and Fort Worth covers.

CONNALLY, David

P.O. Box 430039, Houston, TX 77243-0039
Tel. 713-465-4119
Col. Republic of Texas; Mason County Postal History

TEXAS POSTAL HISTORY SOCIETY - 1999 MEMBERSHIP

COSENTINI, George

12421 Banuelo Cove, San Diego, CA 92130-2277
Tel. 619-259-1564
e-mail: apofpo@adnc.com
Col. V-Mail – APO/FPO/Naval covers;
Houston/Harris County.

CROCKER, Thomas N.

1501 W. Townline, Creston, IA 50801
Tel. 515-782-7081; fax 515-782-3312
e-mail: normcrocker@geocities.com
Col. Texas, Canal Zone, CSA; Vietnam; Laos.
Liberty & Shelby Counties, town of Hardin.

CROSBY, Joe H.

5009 Barnsteeple Ct.,
Oklahoma City, OK 73142-5405
Tel. 405-749-2122
e-mail: jcrosbyci@aol.com
Col. Oklahoma & Indian Territory Postal History;
Greer County, Texas.

DEATON, Charles W.

Box 271110, Houston, TX 77277-1110
Tel. 800-627-3000
Dealer in TX Post. Hist., Mexico, and U.S. Covers

DETERS, Boyd J.

P.O. Box 2563, Victoria, TX 77902-2563
Tel. 512-573-3589 (H) 512-575-4503 (W)
Col. South Texas 19th and early 20th century covers.

DRESSER, George B.

501 Fairview Ave., College Station, TX 77840
Tel. 409-696-4361 (H) 409-845-3327 (W)
e-mail: g-dresser@tamu.edu
Col. Texas Covers prior to 1925 from small towns;
Brazos, Grimes, Madison, Washington, Burleson
and Robertson counties.

EKENSTAM, Fred

P.O. Box 430, Cleveland, OK 74020
Tel. 918-358-1208
Col. Newspaper wrappers, US Postal Cards; Texas
County/Postmaster cancels; Texas RFD; Texas
Octagon cancels; Taylor, Jones, Shackelford,
Haskell, Callahan, Coleman, Fisher, Nolan, Scurry
Counties.

FIETSAM, Henry J.

15011 Mineral Spring, San Antonio, TX 78247
Tel. 210-491-0232
Col. Lavaca, Colorado, Fayette, Gonzales and
DeWitt counties.

FLANAGIN, Romaine

6802 Duquesne Dr., Austin, TX 78723-1327
Tel. 512-926-8653
Col. Iceland, Ireland, Texas Postmarks.

FOHN, Jane King

10325 Little Sugar Creek, Converse, TX 78109-
2409
Tel. 210-566-1436
e-mail: jkfohn1442@aol.com
Col. Ryukyus Islands, Swine, Japan, Israel, US,
Medina County, Texas, WWI Aviation-Texas
Bases; US 9c Alamo (#1043) on cover.

FORTE, Jim

P.O. Box 94822, Las Vegas, NV 89193
Tel. 702-791-6828 (H) 800-594-3837 (W)
e-mail: jimforte@postalhistory.com
Dealer in U.S. & World Wide Postal History,
including Texas.

FRANKS, Ted

322 Prairie Avenue, Cleburne, TX 76031
Tel. 817-558-2162
Email: tfranks@airmail.net
Col. Early covers; Covers from closed POs;
Confederate covers; Republic of Texas items.

GADDY, A.E. (Gene)

9817 Kingsley Rd., Dallas, TX 75238-2059
Tel. 214-341-7239 (W)
Col. Dallas County Postal History

GEBERT, Karl

P.O. Box N, Premont, TX 78375-1314
e-mail: gebert@interar.com.ar
Col. San Antonio and South Texas Postal History

GEELAN, Charles W.

P.O. Box 355, Normangee, TX 77871-0355
Tel. 409-396-5102
Col. Masonic; Texas Cities

GERMANN, John J.

12102 Whittington, Houston, TX 77077-4911
Tel. 281-493-3938 (H) 713-782-1640 x276 (W)
e-mail: jghist@neosoft.com
Col. Texas postmarks: DPO's, Stations, & Branches

GERMER, Louis

227 Irvington Dr., San Antonio, TX 78209-4219
Tel. 210-826-6575
Col. DPOs of Guadalupe County plus certain
cancellations.

GLASS, Edward B.T.

1829 California N.E., Albuquerque, NM 87110
Tel. 505-265-4858
Col. U.S. Classics & Texas Postal History

GOERTE, Carl W. Jr.

Box 927, Shiner, TX 77984
Tel. 512-594-3128
e-mail: goerte@gvec.net
Col. US, Texas Revenues.

TEXAS POSTAL HISTORY SOCIETY - 1999 MEMBERSHIP

GREEN, Nonie

2401 Colorado, San Angelo, TX 76901-3713
Tel. 915-949-2920
Col. Tom Green & West Texas counties; Towns:
Victoria, El Paso, Brownsville; Johnson County;
Texas forts and military bases; WW I & II; Egyptian
Postal Stationery; Savannah. GA covers & Georgia
registered covers, schools and colleges. Also
Sterling, Coke, Runnels, Concho, Menard,
Schleicher, Irion, and Reagan counties.

GROSSE, John W.

P.O. Box 9066, Houston, TX 77261
Tel. 281-328-4725
e-mail: johngrosse@compuserve.com
Col. Texas Postal History, D.W.I.

GUNTER, Erin R.

8865 Syble Dr., Baton Rouge, LA 70814
Tel. 504-925-0615
Col. LA Post. Hist., U.S. Banknote Issues, and
Scandinavia

HAMBRIGHT, James W.

470 Orleans Street, Beaumont, TX 77701
Tel. 409-892-4518 (H) 409-838-6412 (W)
Col. Confederate covers to or from Beaumont and
Jefferson County; Texas Republic; Sabine Pass,
Orange and Jefferson counties.

HENDERSON, B.H. (Bill)

6216 Franwood Terr., Ft. Worth, TX 76112
Tel. 817-429-0532
Col. Hill County, Texas

HILL, Edward M.

4008 Chatham Lane
Houston, TX 77027

HOUSTON PUBLIC LIBRARY

Serials Department, 500 McKinney,
Houston, TX 77002

HOUSTON, Sykes

4107 Bayberry Drive, Austin, TX 78759
Tel. 512-345-4942 (H) 512-345-1111 (W)
e-mail: sykesh@flash.net
Col. Stampless Texas covers, early - Civil War.

HURWITZ, Edward J., M.D.

5100 San Felipe #281 East
Houston, TX 77056
Tel. 713-622-6027 (H) 713-981-4444 (W)
Col. Houston, Harris County.

JANZEN, Myron

5 Oakwilde Ct., Houston, TX 77043
Tel. 713-467-8781 (H) 713-468-8211 (W)
e-mail: mrjanzen@hotmail.com or
myron_janzen@duchesne.org
Col. U.S. commemoratives, Kansas postmarks.

JONES, LaVerne

1244 E. Avila, Casa Grande, AZ 85222-1105
Tel. 520-836-8564
Col. Texas Postmarks

KEAN, Thomas J.

P.O. Box 260063, Littleton, CO 80163-0063
Tel. 303-773-0258 (H) 303-721-7155 (W)
e-mail: gandeic@aol.com
Col. Pre-1860 Texas Forts, Karnes County

KELLY, Don

6650 Prutzman Rd., #117C, Beaumont, TX
77706-5950
Tel. 409-866-8489 (H) 409-727-2384 (W)
Col. Texas Aviation, Texas Centennial, USS Texas,
Texas Hotels.

KIEL, Frank W., M.D.

133 Skyline Drive, Comfort, TX 78013
Tel. 830-995-2706
e-mail: sky133@hctc.net
Col. Saudi Arabia; Kerr and Kendall Counties.

KING, Vince

315 S. Locust Street, Denton, TX 76201
Tel. 940-321-8901 (H) 940-898-1173 (W)
e-mail: entech@iglobal.net
Col. Canada Small Queens stamps & covers;
Victorian Canada Revenues; Canada Taxpays; 19th
Century, Nacogdoches, Brazos, Denton, Leon,
Coleman, Robertson, Limestone, Collin, & Falls Co.

KOWALCHIK, Jerry

609 Tanglewood Drive
Friendswood, TX 77546
Tel. 281-482-9277
Galveston/Galveston Co.; Confederate Texas

KUBAL, George (Castle Stamp & Coin)

P.O. Box 1196, Hewitt, TX 76643-1196
Tel. 254-662-4164 (H) 254-666-7755 (W)
Dealer in US Mint & Used, BoB, PNCs, P/Bs, FDCs,
Texas Postal History, Germany, WW Topicals.

LASSIG, William

P.O. Box 310988, New Braunfels, TX 78131-0988
Tel. 830-625-4300
Col. Comal & Guadalupe County Covers

LEISSNER, Edgar L.

711 Canterbury Hill, San Antonio, Texas 78209
Tel. 210-826-1522
Col. Bexar County and Mexico

LEWIS, Dan J.

2351 N. Mill #13, Lewisville, TX 75057-2168
Tel. 972-436-3105
Col. Belgium; Haiti; Honduras; Polar Covers;
Cooke County Postal History

TEXAS POSTAL HISTORY SOCIETY - 1999 MEMBERSHIP

LOGAN, James T. (Alamo Heights Stamp Shop)
1201 Austin Hiway, #128, San Antonio, TX 78209
Tel. 210-494-2249 (H) 210-826-4328 (W)
e-mail: alamojtl@aol.com
Col. General - Dealer

MARGULIS, Martin
4159 Steck Ave., No. 113-H, Austin, TX 78759-8511
Tel. 512-343-6785
Col. New York City and Staten Island postal history;
Austin & Travis County, Texas

MARTIN, Paul L.
12767 Bethel Road, Montgomery, TX 77356
Tel. 409-449-5039 (H) 281-350-7000 (W)
e-mail: plmartin@aol.com
Col. History of Montgomery County, researching
history of Post Offices in Dacus, Vance or Bethel
(community) Texas

McDANIEL, William K.
800 Cannan Dr., Angleton, TX 77515
Tel. 409-849-6045
Col. U.S. 3¢ 1851-57 issues; Texas Postal History,
particularly Brazoria County.

MIKESKA, Marvin R.
P.O. Box 26, Longview, TX 75606
Tel. 903-757-6004
Col. Early Texas covers; Longview, TX; West, TX;
Hill, Gregg and McLennan counties.

MOMMSEN, Durward (Chick)
10625 Countess Drive, Dallas, TX 75229-5106
Tel. 214-358-3973
Col. Black Jack covers from Texas and Wisconsin.

OLDS, Robert S.
P.O. Box 150505, Austin, TX 78715
Tel. 512-899-2298
Col. State Revenues and Taxpays; Texas and
Vermont Postal History

PARKER, John M., M.D.
3713 W. 15th Street, Suite 402, Plano, TX 75075
Tel. 972-416-1571 (H) 972-596-5900 (W)
US used and unused, postal history related to Rusk
and Panola counties

PARKER, Ward S.
6 Shardue Ln., St. Louis, MO 63141-7707
Tel. 314-432-2743
Col. 19th Century Missouri and Illinois; St. Louis
Worlds Fair 1904-cards and covers

POORE, Rev. Elwood S.
1910 Laurel Rd., Gainesville, TX 76240-5118
Tel. 940-668-8076
Col. US & Canada postal history; DPO's;
Gainesville/Cooke County

POSTAL HISTORY FOUNDATION
P.O. Box 40725, Tucson, AZ 85717-0725
Tel. 602-623-6652
Postal History - all areas

PULVER, Dale R.
7725 Beaver Creek Dr., Mentor, OH 44060-7121
Tel. 216-255-4952
Col. Mexico in all areas; Mexican-American War
1846-1848.

REYNOLDS, Ben R.
Box 8072, Longview, TX 75607
Tel. 903-757-8474
e-mail: bensbooks@worldnet.att.net
Col. First Day Covers for Scott #776 & 938.

RICE, Kim A.
165 Meadow Avenue, New Braunfels, TX 78130
Tel. 830-625-8165
Col. DPOs; Texas Centennial Covers. Comal and
DeWitt Counties; New Braunfels.

RIGHTMIRE, Vance F.
1618 W. 9 1/2 St., Austin, TX 78703
Tel. 512-478-9581 (H) 512-276-7793 (W)
Col. Travis County.
Dealer: General; Texas Postal History;

ROBIE, George F.
620 Tristram Ave., Borger, TX 79007-6345
Tel. 806-273-5402
Col. Texas Panhandle Postal History & Hutchinson
County; ; Covers: Mobeetie, Tascosa, Early
Panhandle Zulu, Saint's Roost, Clarendon, Early
Borger & Phillips, Whittenburg, Plemons (1926-30).

RODGERS, Richard R.
527 Lombardy Dr., Sugarland, TX 77478
Tel. 281-491-0012 (H) 713-888-5340 (W)
Col. Houston & Harris County Postal History.

ROSENBERG LIBRARY
c/o Casey Edward Greene
Head, Special Collections
2310 Sealy Avenue
Galveston, Texas 77550-2296
Galveston County Library with large collection of
Texana History

ROWE, John N., III
6301 Gaston Ave., Suite 650, Dallas, TX 75214
Tel. 214-824-5337 (H) 214-826-3036 (W)
Col. Texas 1800-1875.

ROWIN, John F.
716 Robin Ave., #1, McAllen, TX 78504-1729
Tel. 956-686-4332 (H) 956-383-1656 (W)
Col. US; Plate Number Coils on Cover; German
Area; Texas Postal History south of the Nueces
River.

TEXAS POSTAL HISTORY SOCIETY - 1999 MEMBERSHIP

SCHMIDT, Dennis W.

4325 Smallwood Road, Paris, TX 75462
Tel. 903-784-8777
e-mail: DEWS@meto.com
Col. U.S. Officials - stamps, covers & postal stationery; early Texas covers; Lamar County.

SCHWEITZER, Jeffrey M.

5812 Beaumont Place, El Paso, TX 79912-5343
Tel. 915-584-1882 (H) 915-779-6363 (W)
Col. United States Plate Blocks, Israel First Day Covers; El Paso County Texas Postal History.

SIMMONS, David J.

3 Adler Circle, Galveston, TX 77551
Tel. 409-744-4929 (H) 409-772-2611 (W)
Col. Galveston Ad-Covers; Galveston (City and County).

SKINNER, Hubert C.

Box 4097, New Orleans, LA 70178-4097
Tel. 504-822-3074 (H) 504-862-3193 (W)
Col. U.S. 19th Century (in depth); New Orleans, New York, Texas and Louisiana postal history; CSA stamps and postal history; all early Texas material.

SMITH, Jack M. Sr.

P.O. Box 334, Burnet, Texas 78611
Tel. 512-756-7082
Col. Texas DPO's, Texas Doane Coordinator; Burnet County.

SPIES, Richard E.

350 Nassau, San Antonio, TX 78213-4049
Tel. 210-349-7560
Col. Texas Postal History, RPO's-HPO's, General Collection

STANTON, Thomas E.

2109 Alice Ave., Apt. #2, Oxon Hill, MD 20745-3507
Tel. 301-630-0210
Col. Civil War Reconstruction Era; Railroad mails.

STEVER, Rex H. (Jim)

44 Camden Place, Corpus Christi, TX 78412-2613
Tel. 361-991-6085 (H) 361-991-4688 (FAX)
Col. South Texas postal history, especially Nueces County & Republic of Texas; San Patricio, Corpus Christi. Also Bee, Live Oak, Duval, Kenedy, Jim Wells, Kleberg, Brooks, Jim Hogg, Starr, Zapata, Webb, and Uvalde counties.

STRAUSS, W.L. (Bill)

HC 64 Box 366, Big Lake, TX 76932
Tel. 915-884-2382
Texas Hotels; Texas Wells-Fargo Covers; #513 on cover; Tom Green, Reagan and Crockett counties.

TANNENBAUM, Dr. M. M.

89-43 96 Street, Woodhaven, NY 11421

TODSEN, Dr. Thomas K.

2000 Rose Lane, Las Cruces, NM 88005-1456
Tel. 505-524-1250
Col. New Mexico Postal History.

TREAT, William. Jay

6603 Hunter Trail Way, Frederick, MD 21702
Tel. 301-662-9257 (H) 301-898-7025 x2334 (W)
e-mail: jtreat@biowhittaker.com
Col. Texas Postal History along the overland route to California; Colorado Postal History from pre-territory to about 1920.

TURNER, Leonard A.

1517 N. Broadmoor, Lufkin, TX 75904
Tel. 409-634-4566
Col. U.S. 19th and early 20th century; East Texas lumber companies and lumber towns.

UHLS, William T.

4908 Prarie Dunes, Austin, TX 78747
Tel. 512-282-4544
e-mail: buhls@worldnet.att.net
Col. Texas Postal History; Canal Zone Postal History; US Revenues and B.O.B.

UNIVERSITY OF TEXAS AT DALLAS

Materials Acquisition Dept 1153
P.O. Box 830643 - MC33
Richardson, TX 75083-0643
Tel. 972-883-2964

WALLACE, R.E. (Bob)

312 E. Weatherford St., Ft. Worth, TX 76102
Tel. 817-338-4631
Dealer in general worldwide, postal history, U.S. postal history

WALSTON, Gary H.

206 Stanley Court, Friendswood, TX 77546
Tel. 281-482-2179
e-mail: walston@earthlink.net
Col. Texas & Nevada Postal History; Pre Union South Africa Postal History; Travis, Williamson, Terry, Eastland, Harris and Parker counties.

WALSTON, Royce

P.O. Box 23014, Waco, TX 76702-3014
Tel. 254-776-3382 (H) 254-772-0048 (W)
Col. Anderson, Leon and McLennan County Postal History.

WATZ, Norma B.

920 Empire, El Campo, TX 77437-2823
Tel. 409-543-4325
Col. Wharton County Postmarks 1846-1950; Confederate letters from Wharton County, Texas; Bible-related postmarks.

TEXAS

POSTAL

HISTORY

- STAMPLESS
- CONFEDERATE
- D.P.O.
- ADVERTISING
- 1936 CENTENNIAL - AND RELATED
- ETC.

**WE BUY AND SELL A FULL LINE OF TEXAS, U.S. & WORLD
POSTAL HISTORY. COPIES OF MATERIAL FROM YOUR
COLLECTING AREA SENT UPON REQUEST.**

THE RIGHT STAMP COMPANY

(Formerly Austin Stamp & Coin)

VANCE RIGHTMIRE

P.O.Box 5280

Ph. 512-4789581

Austin, Texas 78763-5280